



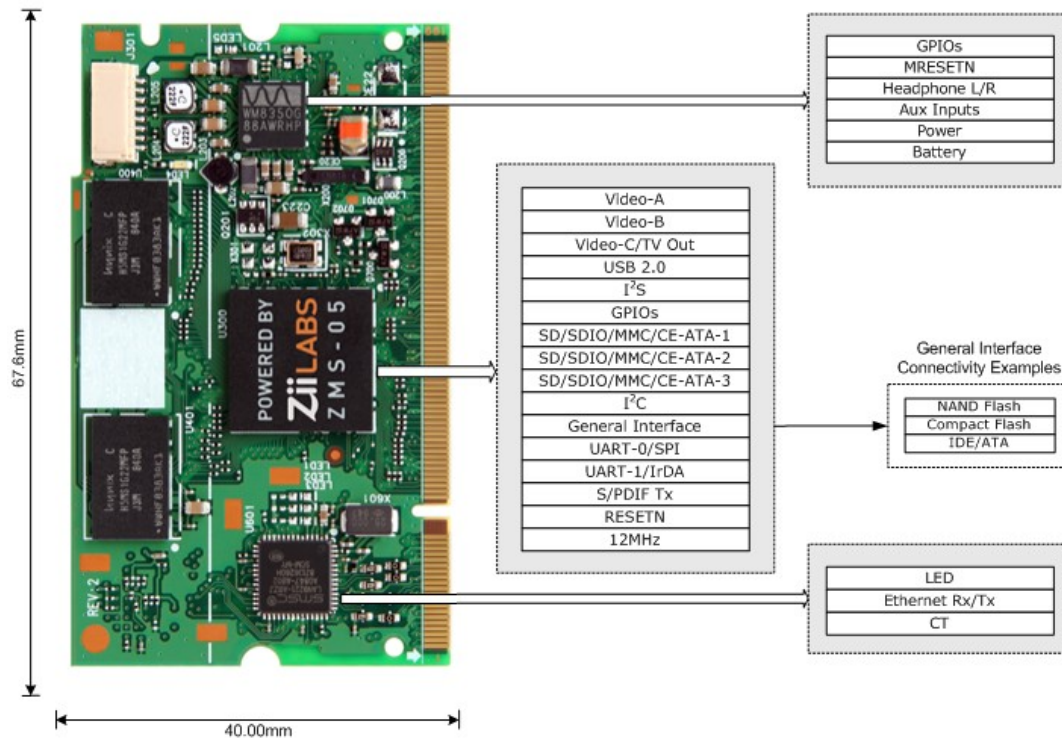
ZMS-05

System Module

Simplified Product Development

The ZMS system module provides customers with a market-ready solution that combines the ZiiLABS ZMS-05 applications processor with core components. The low-power, production ready module can be integrated into a broad range of custom target boards.

- Product ready system module in compact form factor
- High-performance ZMS-05 media-rich applications processor
- Industry standard 200-pin universal SODIMM connector
- Integrated 256MB RAM, 16 MB ROM, PMU, Audio DAC, Ethernet and USB 2.0
- Rich peripheral connectivity
- Flexible Board Support Packages



Introduction

The ZMS-05 System Module provides a powerful media-rich SODIMM-based solution that can significantly reduce the time, cost and complexity of introducing new products. At the heart of the System Module is the advanced ZMS-05 low power SoC delivering advanced UI capabilities, OpenGL ES 3D graphics, rich media playback and record and 1080p HD video output.

ZMS-05 System Module Key Components

- ZiiLABS ZMS-05 Media-Rich Applications Processor
- 256MB 64-bit Mobile DDR Memory
- 16MB NOR Boot ROM
- Power Management Unit
- High Quality Stereo Audio DAC
- 10/100 Ethernet Controller
- JTAG Diagnostics port
- Analog audio connector
- Independent GPIO for:
 - ZMS-05
 - Power Management Unit

ZMS-05 System Module Connectivity

- 3x bi-directional Video Camera/Display Ports
- Analog HD TV encoder
- USB 2.0 OTG controller with PHY
- 3x SD/SDIO/MMC/CE-ATA ports
- 2x 3Mbps UART
- I²S
- S/PDIF
- I²C
- General Interface Expansion Port

ZMS-05 System Module Software Features

- Linux 2.6 Kernel
- Custom Boot loader
- USB Recovery Application
- Recovery RAM File System Image
- Extensive component driver support for LCD Displays, Camera Sensors, HDMI, Storage, Wi-Fi and Bluetooth
- OS Support for Plazma OS and Android

Physical

- 67.60mm x 40mm x 3.8mm
- 200-pin SODIMM Connector Module
- Available in both the Right Angle Type and Vertical Type Standard SODIMM Connector

Power

The power management unit can operate from the following power sources:

- 5V input
- Single cell lithium-ion or lithium-polymer battery
- USB host port, supplying 5V on its VBUS

Design Licenses

The ZMS-05 is available as a licensable design to OEMs and ODMs looking to develop custom solutions based around the product.

Schematics

These are available on request.

Find out more

For more information please contact:

URL: www.ZiiLABS.com

ZiiLABS